

PEI

MARQUISE

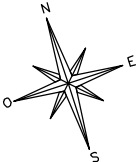
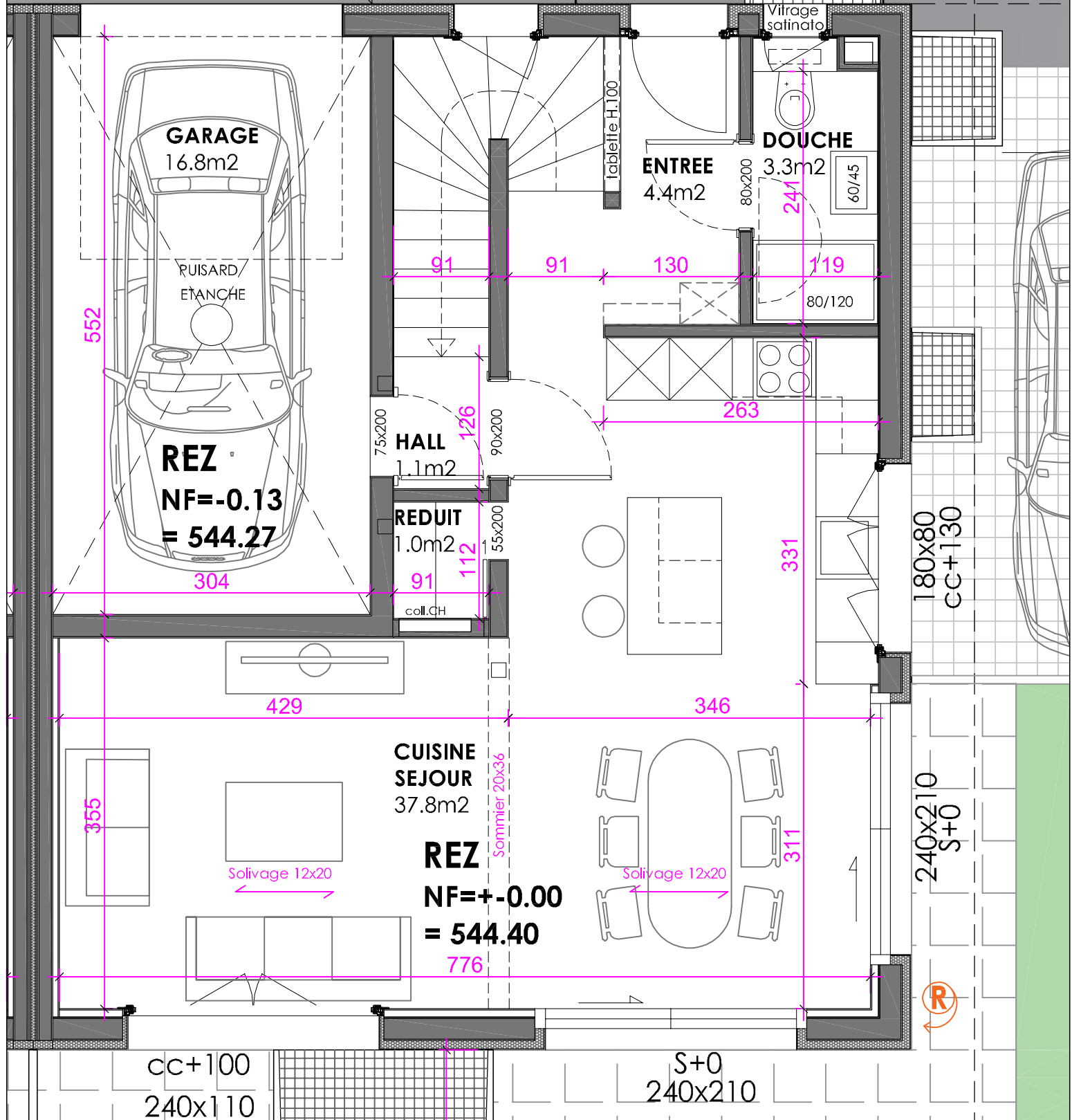
Villa A

250x213

CC+222
80x120

90x210

60x80
CC+130



	OSSATURE BOIS
	BETON
	BRIQUE CIMENT
	ISOLATION

REZ	
ADRESSE: Chemin aux Oies 5 1405 Pomy	ECHELLE: 1-50 (A4) DATE: 2022-12-02

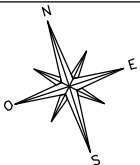
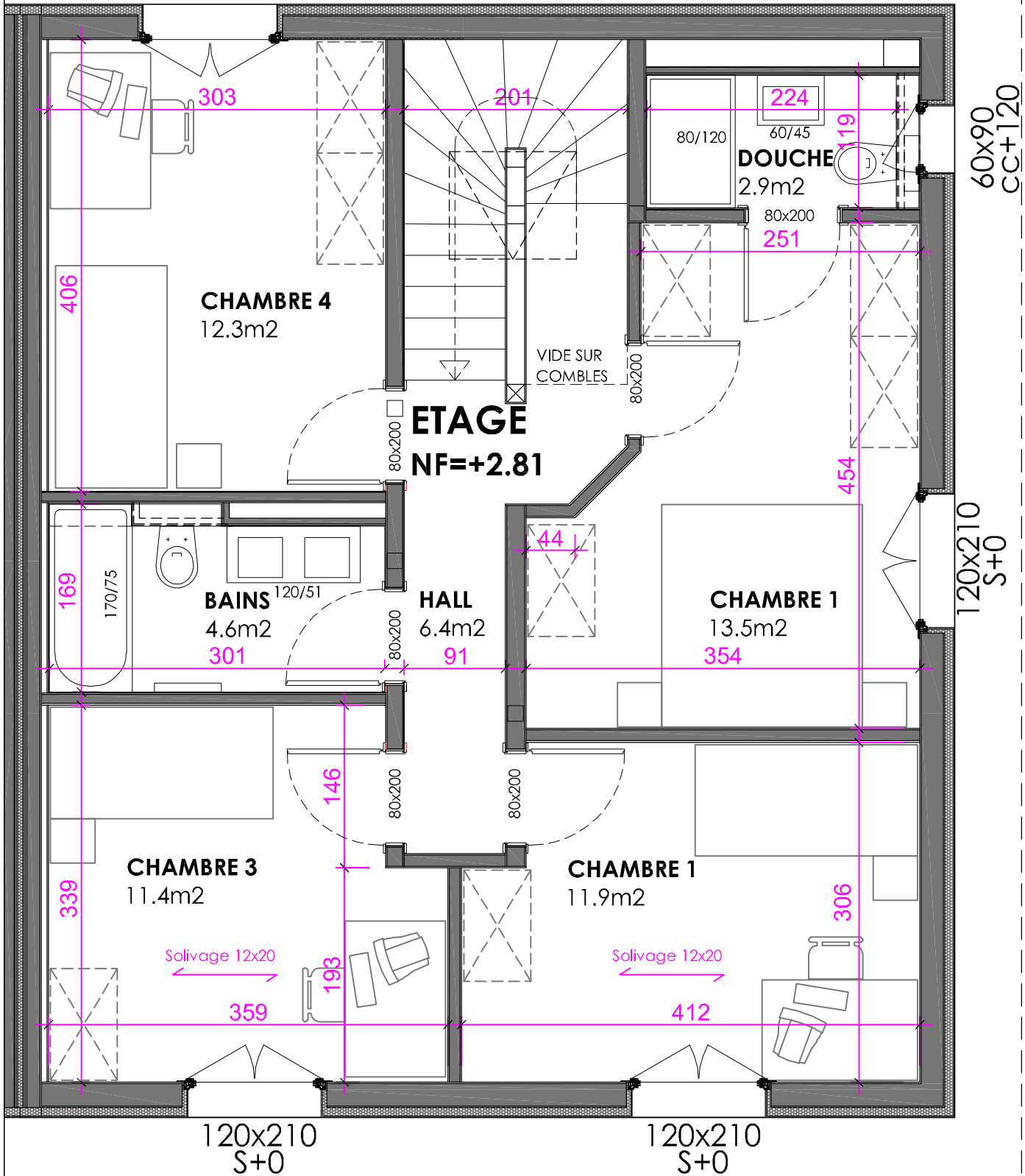
villa A

atelier devaud
architecture

Rue de la Chapelle 1 • CH-1037 Etagnières
T. 021/732 24 64 • F. 021/732 24 65 • M. 079/467 29 61
info@atelierdevaud.ch • www.atelierdevaud.ch

Villa A

S+0
120x210



	OSSATURE BOIS
	BETON
	BRIQUE CIMENT
	ISOLATION

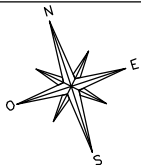
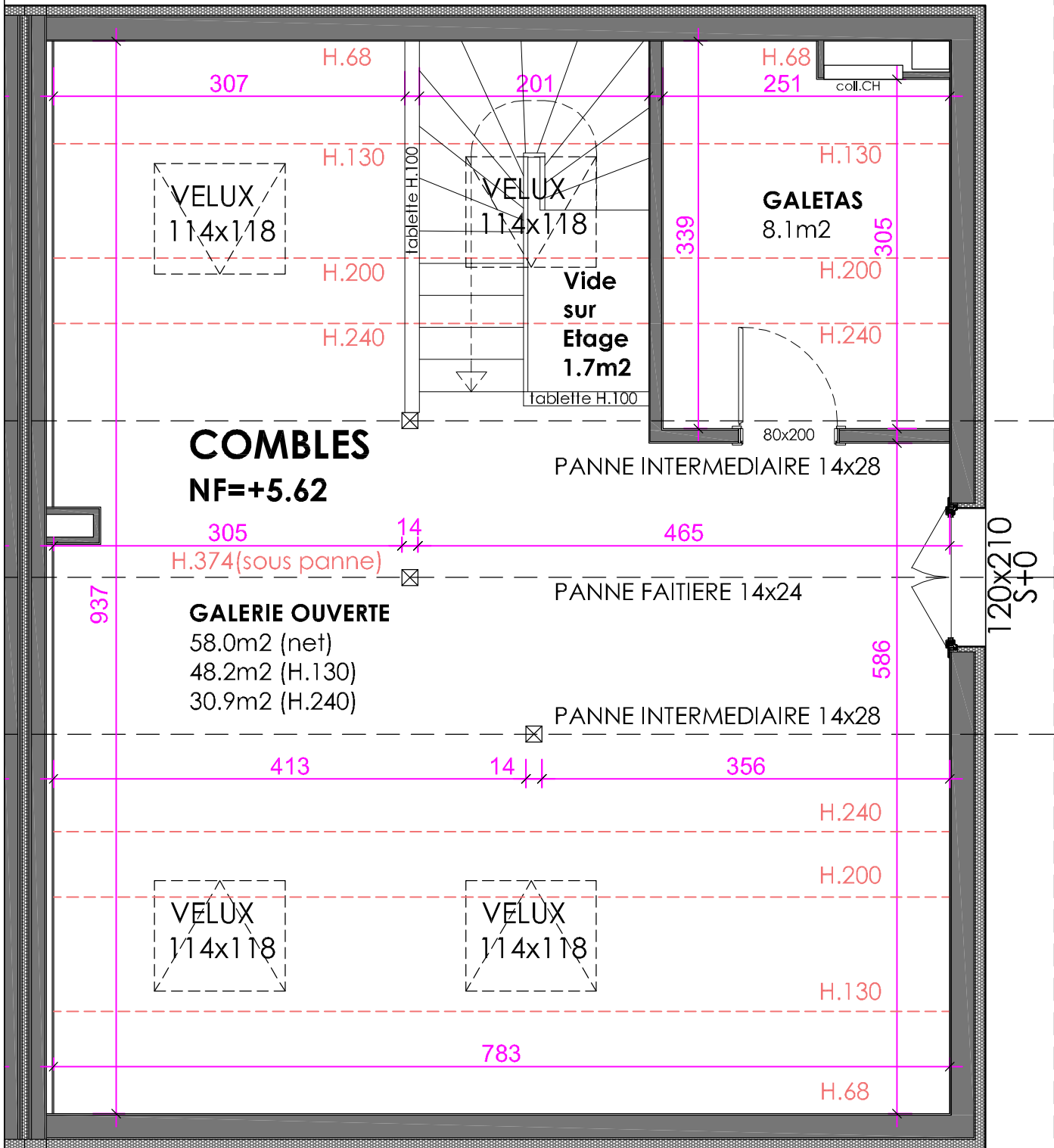
ETAGE

ADRESSE:
Chemin aux Oies 5
1405 Pomy

ECHELLE: 1-50 (A4)
DATE: 2022-12-02

villa A

Villa A



	OSSATURE BOIS
	BETON
	BRIQUE CIMENT
	ISOLATION

COMBLES

ADRESSE:
Chemin aux Oies 5
1405 Pomy

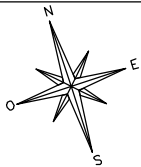
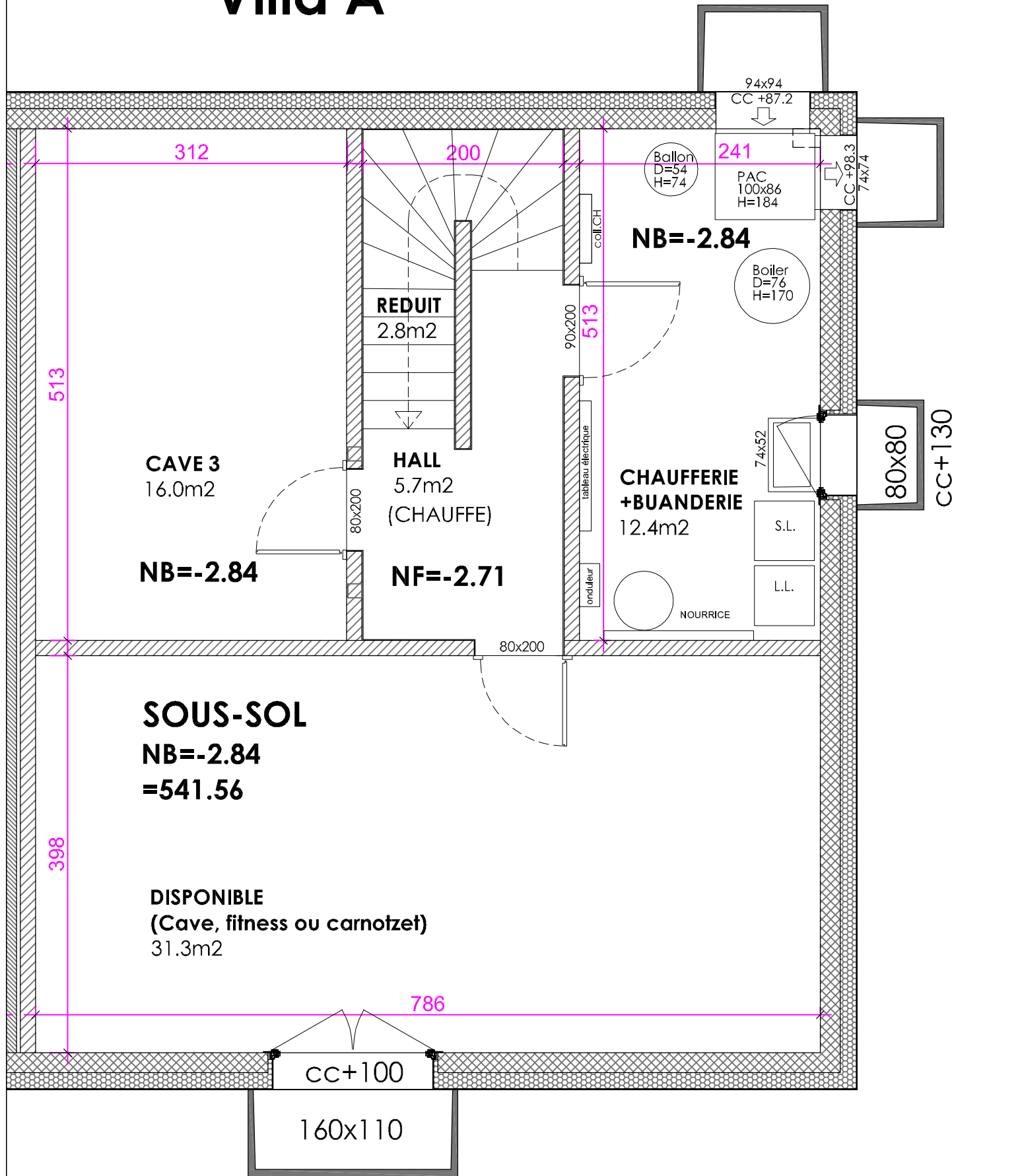
ECHELLE: 1-50 (A4)
DATE: 2022-12-02

villa A

atelier devaud
architecture

Rue de la Chapelle 1 • CH-1037 Etagnières
T. 021/732 24 64 • F. 021/732 24 65 • M. 079/467 29 61
info@atelierdevaud.ch • www.atelierdevaud.ch

Villa A



	OSSATURE BOIS
	BETON
	BRIQUE CIMENT
	ISOLATION

SOUS-SOL	
ADRESSE: Chemin aux Oies 5 1405 Pomy	ECHELLE: 1-50 (A4) DATE: 2022-12-02

villa A

a atelier devaud
architecture

Rue de la Chapelle 1 • CH-1037 Etagnières
T. 021/732 24 64 • F. 021/732 24 65 • M. 079/467 29 61
info@atelierdevaud.ch • www.atelierdevaud.ch