

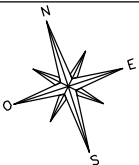
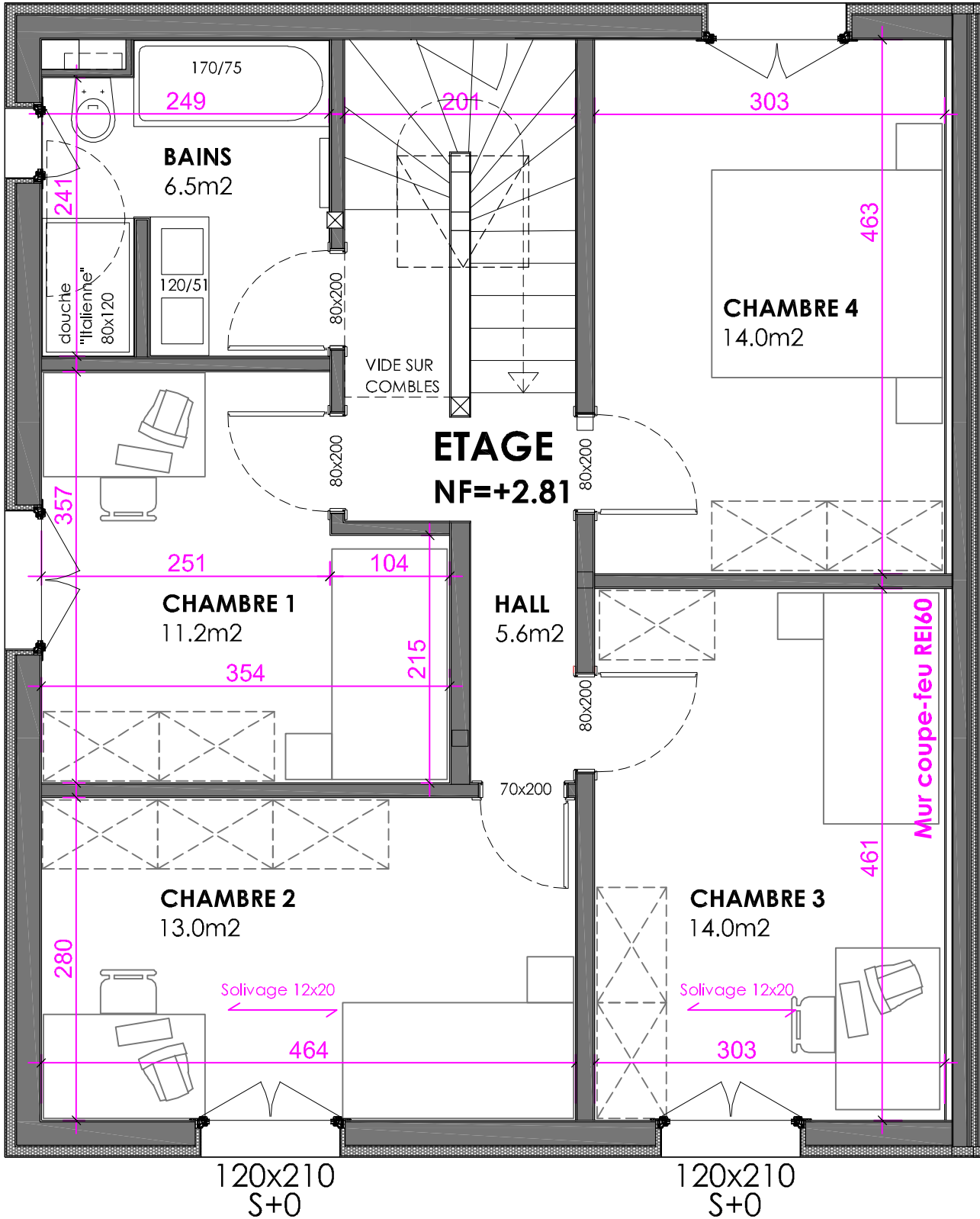


# Villa B

S+0  
120x210

CC+120  
60x90

S+0  
120x210



	<b>OSSATURE BOIS</b>
	<b>BETON</b>
	<b>BRIQUE CIMENT</b>
	<b>ISOLATION</b>

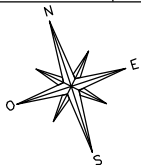
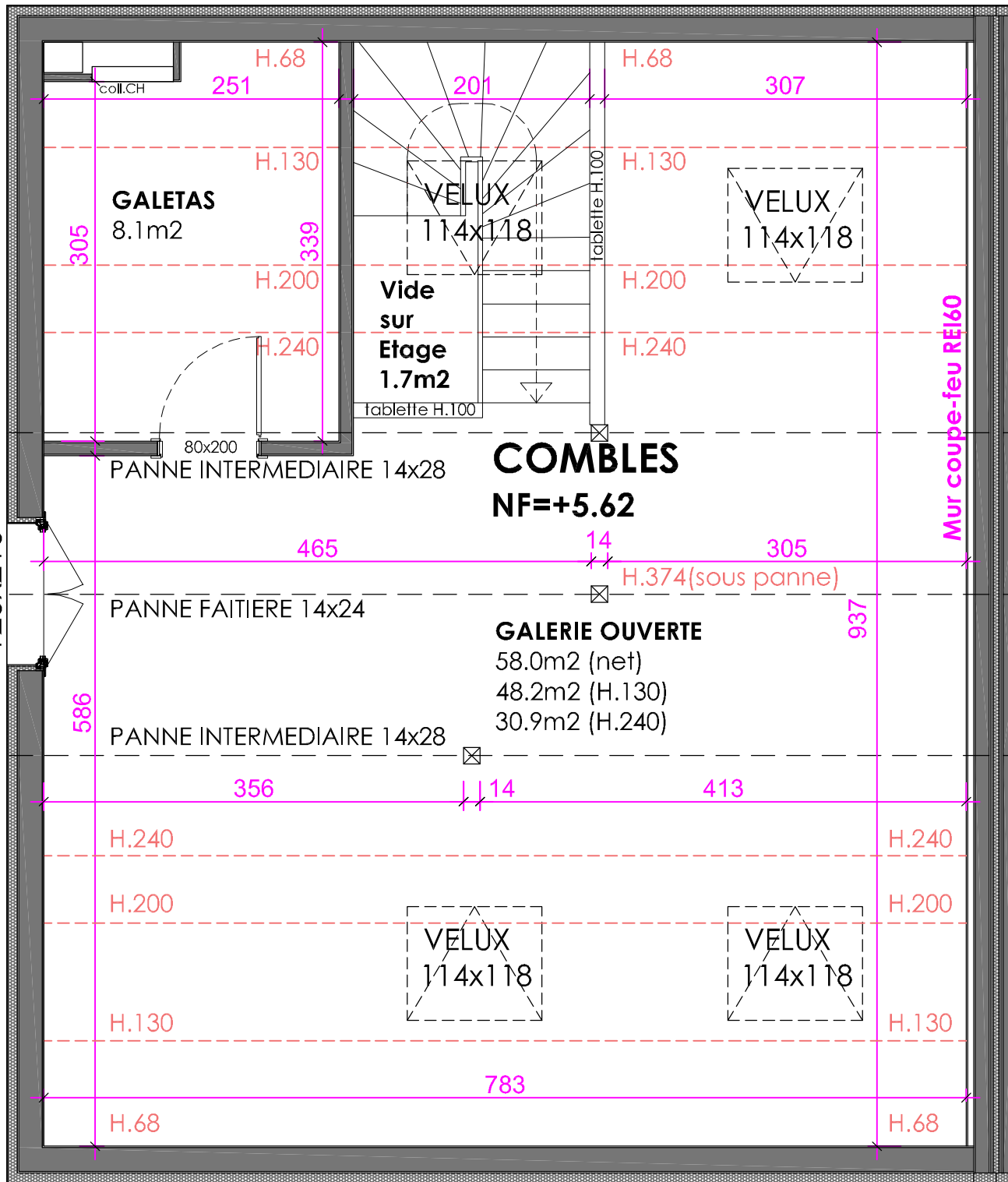
## ETAGE

## villa B

ADRESSE:  
Chemin aux Oies 5  
1405 Pomy

ECHELLE: 1-50 (A4)  
DATE: 2022-12-02

# Villa B



	<b>OSSATURE BOIS</b>
	<b>BETON</b>
	<b>BRIQUE CIMENT</b>
	<b>ISOLATION</b>

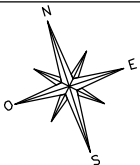
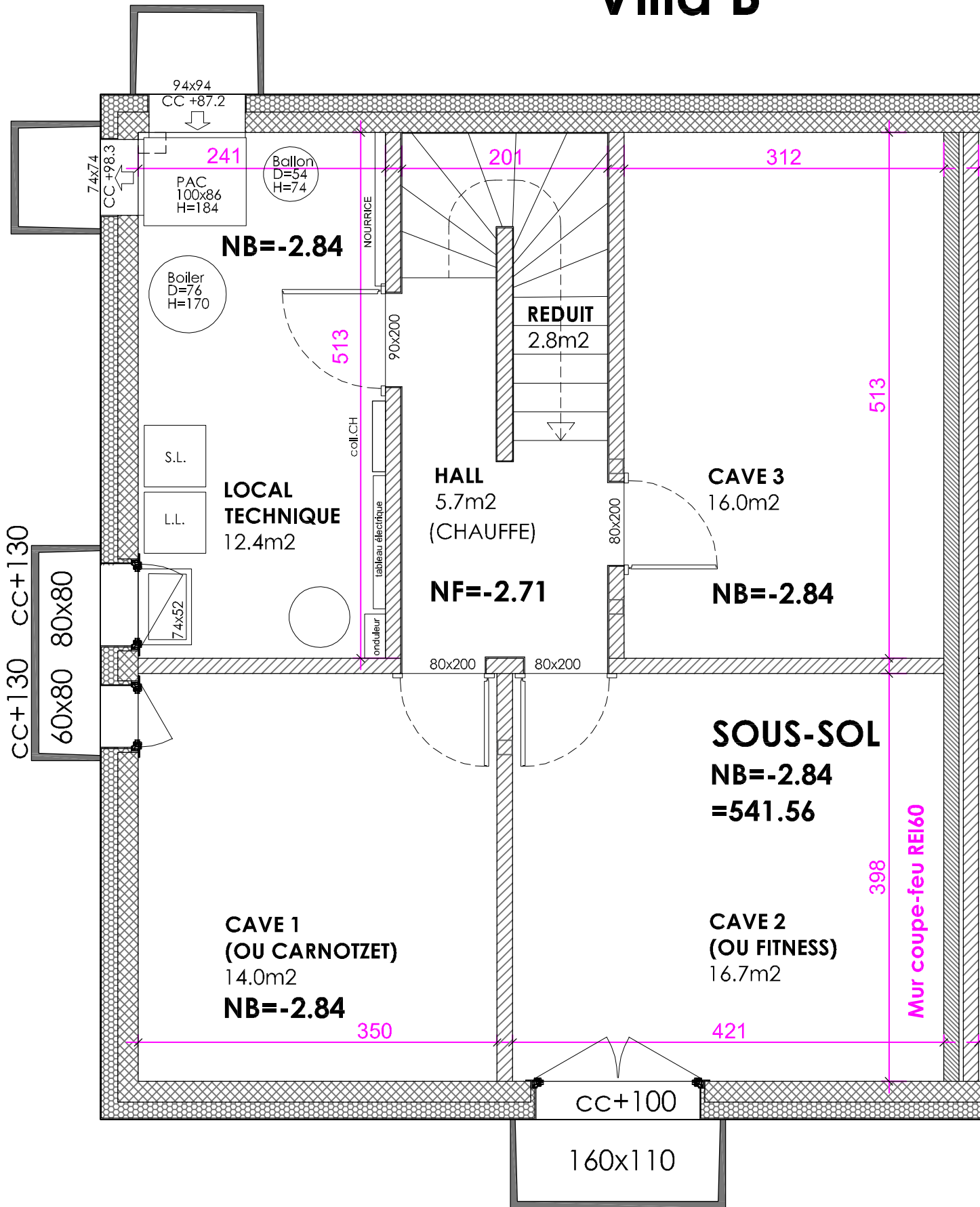
<b>COMBLES</b>	
<b>ADRESSE:</b> Chemin aux Oies 5 1405 Pomy	<b>ECHELLE:</b> 1-50 (A4)
	<b>DATE:</b> 2022-12-02

**villa B**

**atelier devaud**  
architecture

Rue de la Chapelle 1 • CH-1037 Etagnières  
T. 021/732 24 64 • F. 021/732 24 65 • M. 079/467 29 61  
info@atelierdevaud.ch • www.atelierdevaud.ch

# Villa B



## SOUS-SOL

## villa B

ADRESSE:  
Chemin aux Oies 5  
1405 Pomy

ECHELLE: 1-50 (A4)  
DATE: 2022-12-02

