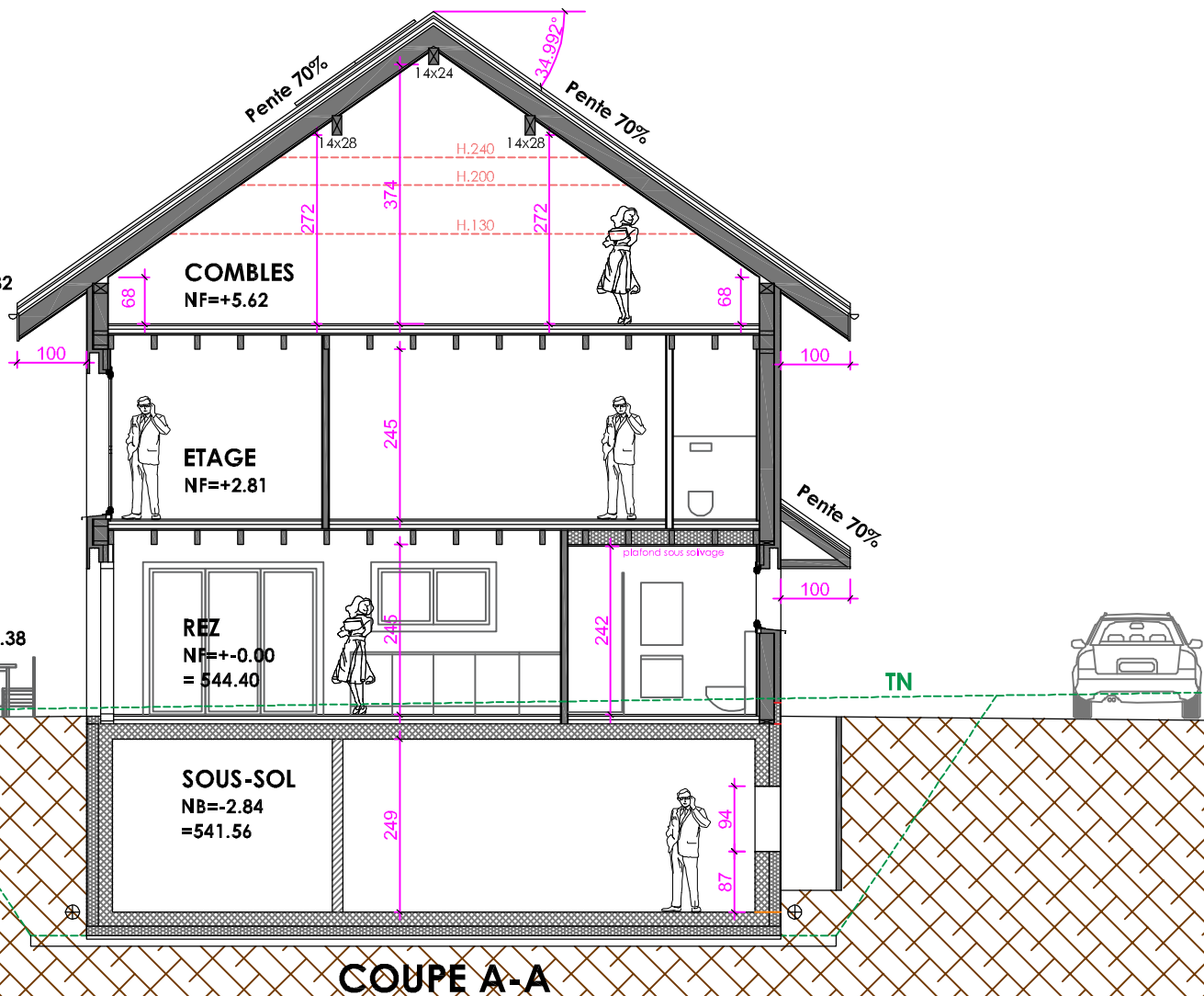


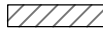



Faîte
+10.12=554.52

Corniche
+5.92=550.32

T.A.
-0.02=544.38



-  OSSATURE BOIS
-  BETON
-  BRIQUE CIMENT
-  ISOLATION

COUPE A-A

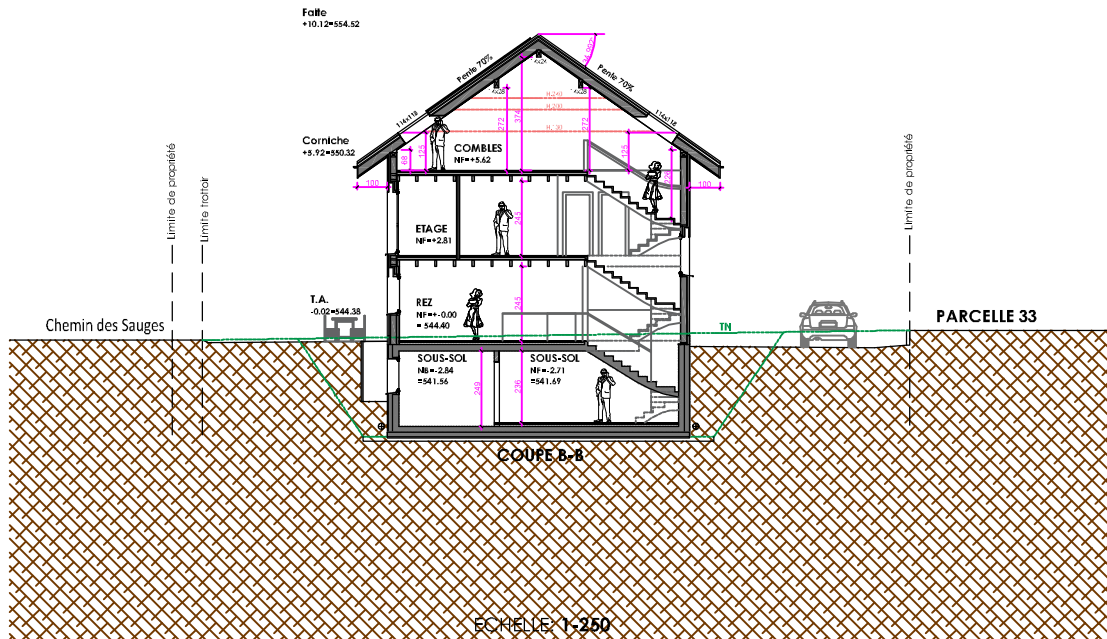
villa A+B

ADRESSE:
Chemin aux Oies 5
1405 Pomy

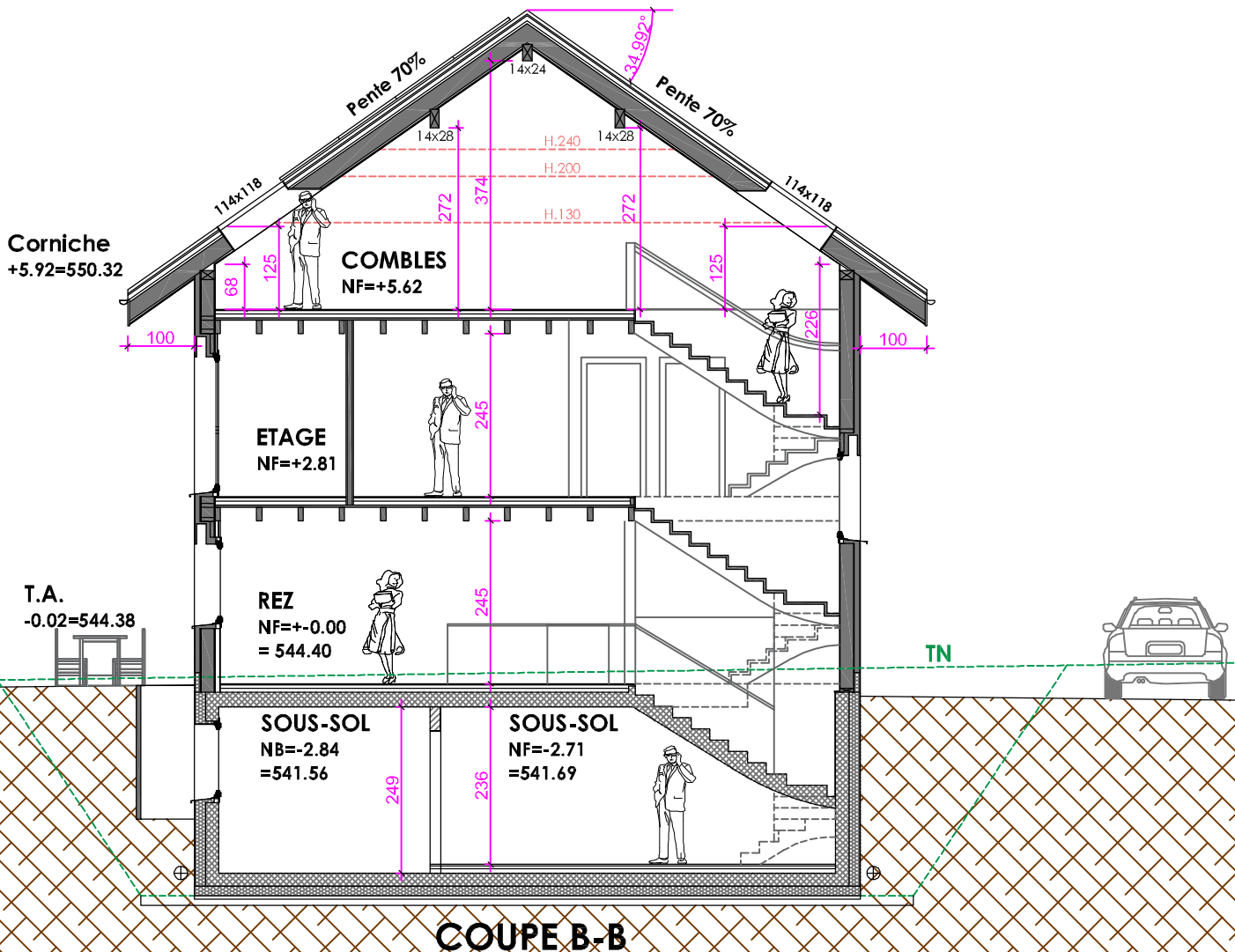
ECHELLE: 1-100(A4)
DATE: 2022-12-02

atelier devaud
architecture

Rue de la Chapelle 1 • CH-1037 Etagnières
T. 021/732 24 64 • F. 021/732 24 65 • M. 079/467 29 61
info@atelierdevaud.ch • www.atelierdevaud.ch



Faite
+10.12=554.52



- OSSATURE BOIS
- BETON
- BRIQUE CIMENT
- ISOLATION

COUPE B-B

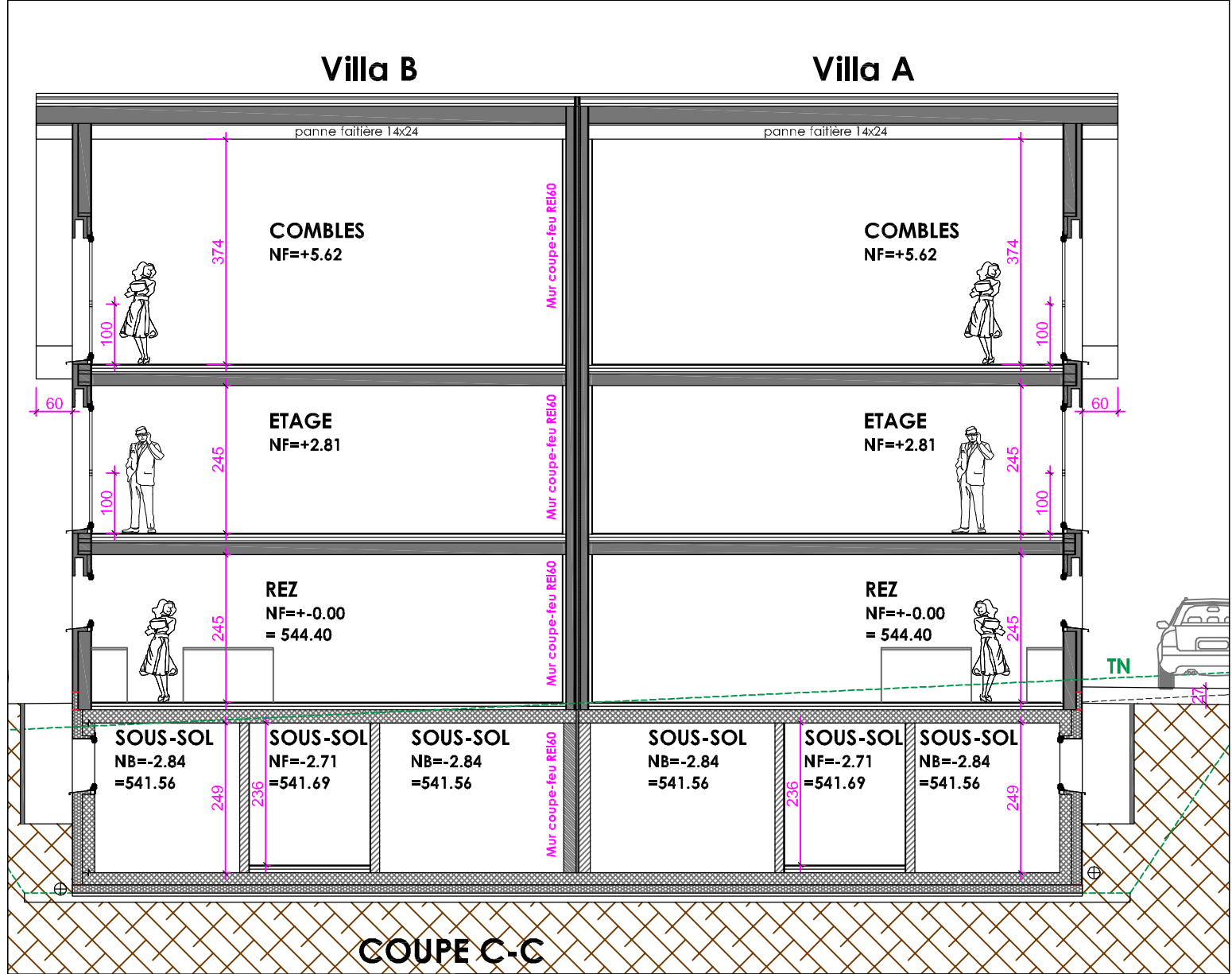
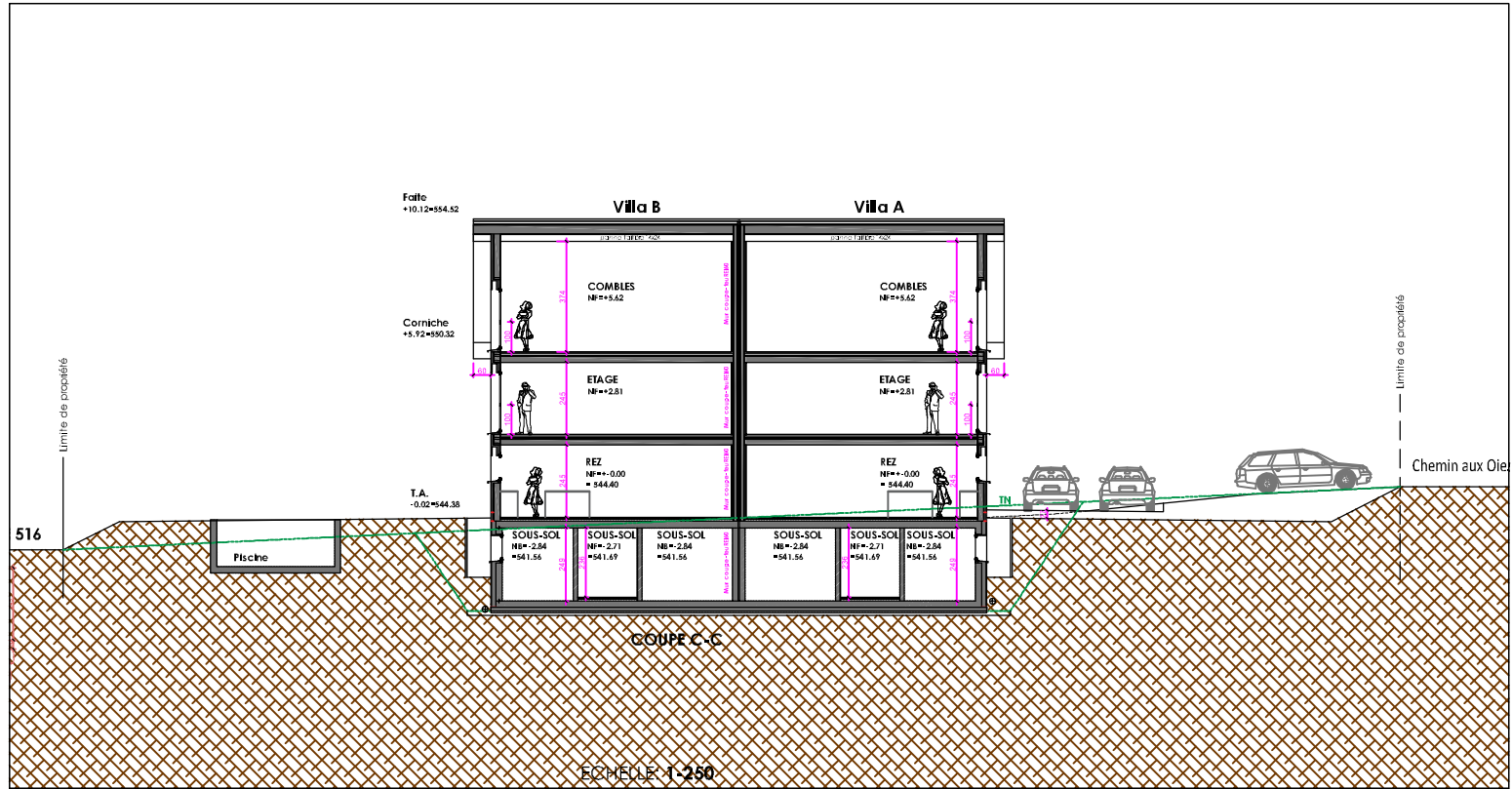
villa A+B

ADRESSE:
Chemin aux Oies 5
1405 Pomy

ECHELLE: 1-100(A4)
DATE: 2022-12-02

atelier devaud
architecture

Rue de la Chapelle 1 • CH-1037 Etagnières
T. 021/732 24 64 • F. 021/732 24 65 • M. 079/467 29 61
info@atelierdevaud.ch • www.atelierdevaud.ch



	OSSATURE BOIS
	BETON
	BRIQUE CIMENT
	ISOLATION

COUPE C-C	
ADRESSE: Chemin aux Oies 5 1405 Pomy	ECHELLE: 1-100(A4) DATE: 2022-12-02

villa A+B

atelier devaud
architecture

Rue de la Chapelle 1 • CH-1037 Etagnières
T. 021/732 24 64 • F. 021/732 24 65 • M. 079/467 29 61
info@atelierdevaud.ch • www.atelierdevaud.ch